

# Innovaciones en MS-WEB Display

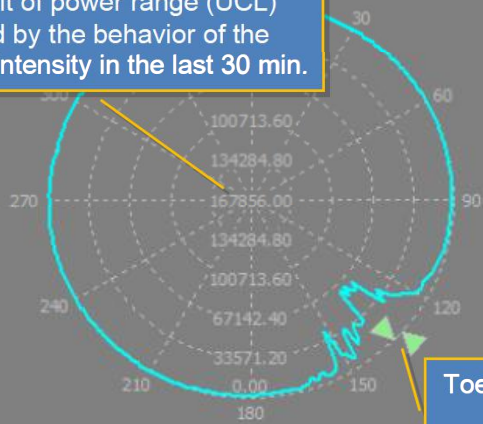
## MillSlicer WEB Display

- Over range indication Displayed when the measured intensity value exceeds the UCL of the last 30 minutes
- When the Inlet/Outlet signals diverge it could mean an inestability in the mill load/discharge.
- Colors - Orange: signal Moderate rise. Red: aggressive signal rise

Cfg.

### Rotational Energy Polar Plot

Upper limit of power range (UCL) calculated by the behavior of the vibration intensity in the last 30 min.



Toe angle indication  
Max. Impact angle indication

### MillSlicer Measurements and Status

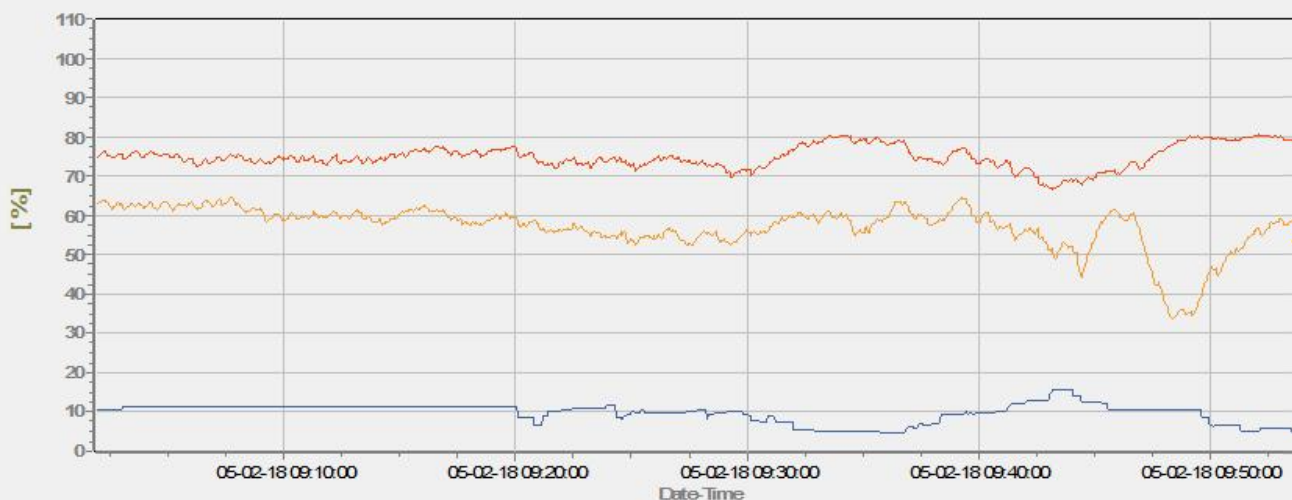
▲	57.77	Inlet Fill Level	LOW	RF Comm. Status
▼	77.86	Outlet Fill Level	4.00	RF Packets/Min
	89.31	Slice Fill Level	3.77	Bat. Voltage
	135.06	Toe Angle	8.15	Mill Speed RPM
	270.00	Shoulder Angle	CW	Mill Dir. CW/CCW
	132.00	Max. Impact Angle		
▲	5.28	Liner Level Damage	5%	

Color shows the communication quality. Green = Ok, Yellow:Low, Red Low-Low Alarm

Maximum impact angle

LDL impact intensity bar:  
 • Green <70% [Ok]  
 • 70% <Yellow <80% [High]  
 • Red > 80% [High-High Alarm]

### Inlet & Outlet Fill Level, LDL & Toe Angle Trends



- Trend**
- LDL
  - Inlet
  - Outlet
  - Bat. Volt.
  - Toe
  - Shoulder
  - Batt. Volt.
  - RPM
  - Max. Angle

- New trend area. The axis with angle values is activated on the right side when activated when the convergence angle or the maximum impact angle are selected.
- Optimized page (60% better performance).
- Less use of memory and execution time.
- Higher speed chart
- The graphic covers all the available area